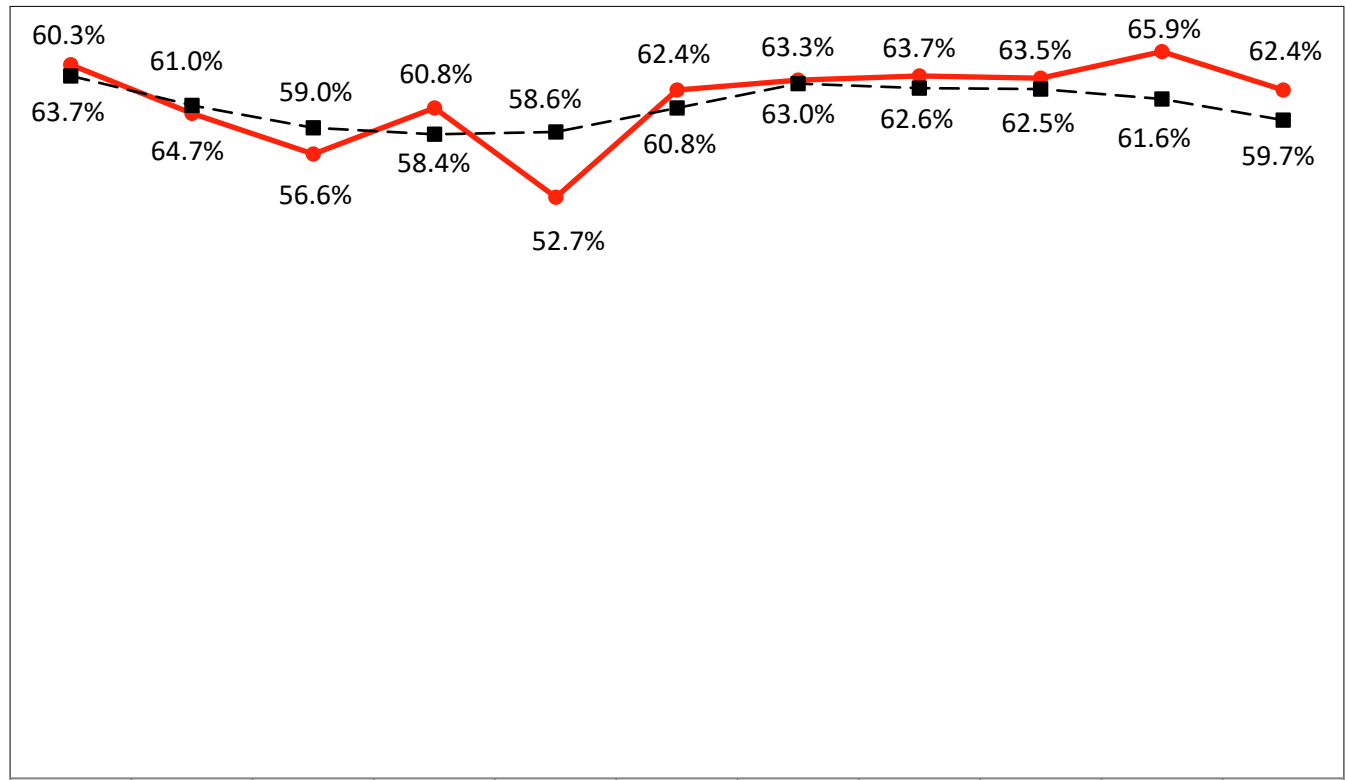


Percent Prenatal Care Begun in First Trimester
 Lubbock County residents/Texas residents
 Texas Department of State Health Services

Percent is Per Total Live Births



	2005	2006	2007	2008	2009	2010	2011	2012	2013	2014	2015
—●— Lubbock County Percentage	64.7%	60.3%	56.6%	60.8%	52.7%	62.4%	63.3%	63.7%	63.5%	65.9%	62.4%
-■- Texas Percentage	63.7%	61.0%	59.0%	58.4%	58.6%	60.8%	63.0%	62.6%	62.5%	61.6%	59.7%