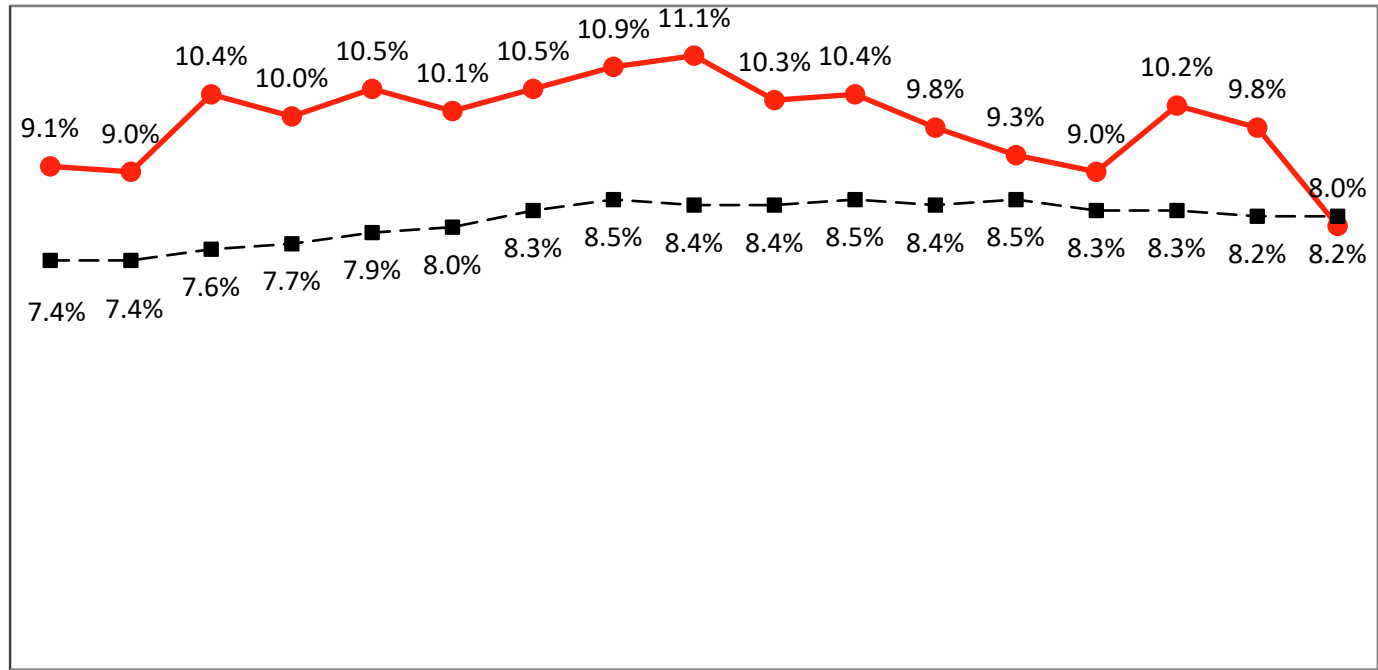


Low Birth Weight Babies  
 Lubbock County residents/Texas residents  
 Texas Department of State Health Services

Definition: Live-born Infants Weighing Less Than 2,500 Grams (Around 5.5 lbs) at Birth  
 Percent is Per Total Live Births



	1999	2000	2001	2002	2003	2004	2005	2006	2007	2008	2009	2010	2011	2012	2013	2014	2015
Lubbock County Cases	345	347	396	393	426	408	415	451	481	448	442	402	360	355	423	416	330
● Lubbock County Percentage	9.1%	9.0%	10.4%	10.0%	10.5%	10.1%	10.5%	10.9%	11.1%	10.3%	10.4%	9.8%	9.3%	9.0%	10.2%	9.8%	8.0%
■ Texas Percentage	7.4%	7.4%	7.6%	7.7%	7.9%	8.0%	8.3%	8.5%	8.4%	8.4%	8.5%	8.4%	8.5%	8.3%	8.3%	8.2%	8.2%